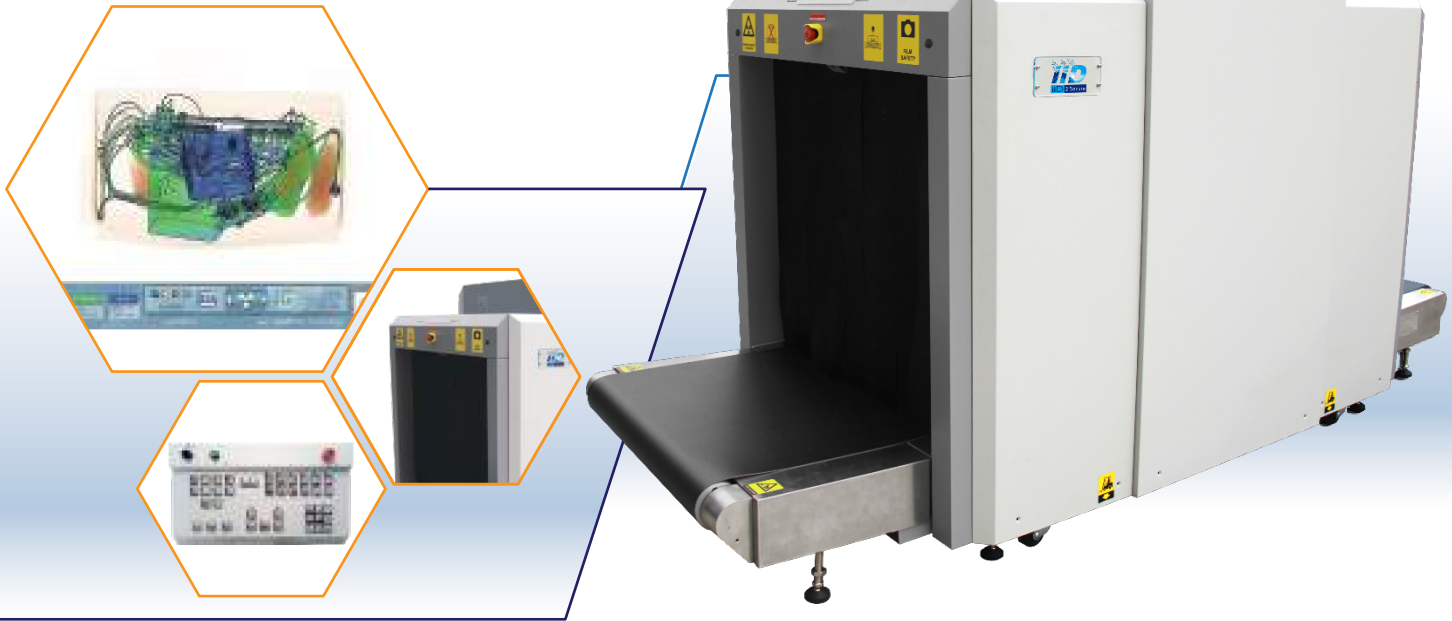




# IIDX-100100G

## Multi-Energy High Throughput X-Ray Security Inspection



### Product Instruction

IIDX-100100G is a practical large tunnel design security equipment for for large size luggage inspection like flight luggage cases and so on. With adjustable conveyor speed(0.2 or 0.4 m/s) and proprietary image display technology ,IIDXM-100100G can improves security check efficiency by 2 times or more while maintaining image quality.

### Technology Features

- ◆ Shiny clear images
- ◆ Sophisticated design with multi-functions operator interface
- ◆ High- resolution
- ◆ Collection the high-speed parallel of detection data
- ◆ With network interface to achieve total network management
- ◆ Support JPG & BMP image transformation format to USB

### Applications

Civil aviation	Highway	Port
Railway	Custom	



www.iid2secure.nl  
 Extra Benefits, Less Price  
 Finestrat,19, 03530 La Nucia, Alicante, Spain  
 © IID Secure Tech S.L.U. 2019

Heemtedestraat 16 Amsterdam, Netherlands  
 Support@iid2secure.nl  
 +31614762425  
 Data Subject to change without notice



## General Specification

- Tunnel size..... 1020 mm (W) x 1020 mm (H)
- Conveyor Speed..... 0.2 m/s, 0.4 m/s (Two steps adjustable)
- Conveyor Height..... 300 mm
- Max. Load..... 200 kg (Evenly distributed)
- Resolution..... Typical: AWG 40      Standard: AWG 36
- Penetration(Steel)..... Typical: 32 mm      Standard: 30 mm
- Spatial Resolution..... Horizontal:  $\Phi$ 1.3 mm      Vertical:  $\Phi$ 1.6 mm
- Image Resolution..... 19"LED (Double Display)

## Image Processing System

- Display..... Black / White, Color
- Processing Function..... F1/F2/F3 self-definition combination, edge enhancement, negative, partial enhancement, gray scale scan.
- Saves Capacity & Pull back..... 100,000 images / infinite review (the previous pictures)
- Resolution..... 1440 x 900
- Processing & Gray Scale..... 24Bit real-time processing/65536
- Enlargement..... Up to 64X dynamic continuous zoom & panning

## X-Ray Generator

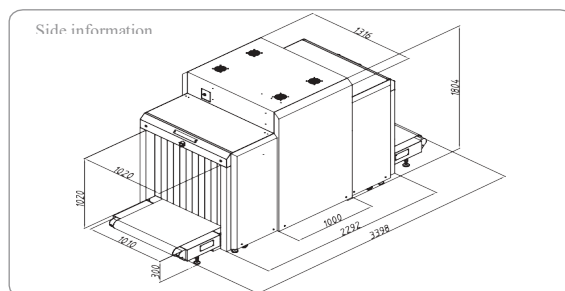
- Anode Voltage..... 160 KV (adjustable)
- Beam Direction..... From top
- Cooling & Running Cycle..... Sealed oil cooling & 100%
- X-Ray Sensor..... Single-energy L photoelectric diode array detector

## IPC Configuration

- Standard Function..... Win7; RAM: 2GB; Hard Disk: 500G; Video Card: 2G;
- Optional Function..... RAM: 4G, 8G, 16G; Hard Disk: 1T, 2T; Video Card: 4G, 8G;

## X-Ray Security

- Single inspection dose rate..... < 2 $\mu$ Gy
- Leakage..... < 1 $\mu$ Gy/h (5cm distance from outer), According to the national and international Safety standard
- Film Safety..... According to the ISO1600 (33DIN) High speed standard



## System Function

- Alarm Function
- Browse
- Fault Self-diagnosis and Maintenance Functions
- Image Navigation
- Limits of Authority Management for Operator
- System Working Timing
- TIP
- User Management
- Urgent Stop
- Working Status Display
- Outlet Skateboard
- Image Split Joint
- Single-directional Scanning
- Date & Time Display
- High Density Alarm
- Image Magnification Display
- Luggage Counting
- Network Interface
- One-key Shutdown
- Self-check Power-on
- Save and Retrieval
- Save As
- Ultra-thin Scanning
- X-Ray Emission Timing
- X-Autosight

## Optional Function

- Bi-directional Scanning
- OTP The Operator Training Program
- Video System
- Voltage Stabilizer
- Voice Recording Function
- Energy Saving
- UPS Uninterruptible Power Supply
- LED Screen Display
- Voice Announcement Function

## Video System

- Using the professional video equipment, it can combine x-ray image, specific package and its owner into one system, to help operators review and analysis after crisis. With this extended function, the operators can quickly target the potential suspects. This system is not only user friendly but also has the remarkable effects which win the warm praise from the public security police officers.

## Installation Data

- Size..... 3398 mm (L) x 1316 mm (W) x 1804 mm (H)
- Weight..... 1200 KG
- Working Temperature / Humidity..... 0°C ~ + 45°C / 10% ~ 95% (non-condensing)
- Storage Temperature / Humidity..... - 40°C ~ + 60°C / 10% ~ 95% (non-condensing)
- Power Supply..... AC 220 V (+10% ~ -15%) 50 $\pm$ 3 (Hz)
- Power consumption..... About 0.50 (KVA)



www.iid2secure.nl  
 Extra Benefits, Less Price  
 Finestrat, 19, 03530 La Nucia, Alicante, Spain  
 © IID Secure Tech S.L.U. 2019

Heemtedestraat 16 Amsterdam, Netherlands  
 Support@iid2secure.nl  
 +31614762425  
 Data Subject to change without notice